



LGX-Style Module



Ultra-High Density Module

OmniPON™

PLC Splitter Modules

Features...

- Low-insertion loss
- Available in 3 form factors
- Wide operating wavelength from 1260nm to 1650nm
- Optional Integrated monitoring port
- Choice of connectors or unterminated pigtails
- Star and tree options for cascading multiple splitters
- Flexible 1, 2, and 4U offerings

Benefits...

- Extends network reach
- Reduces space while increasing capacity
- Compatible with future PON offerings
- Permits non-intrusive fiber monitoring
- Increases service flexibility
- Provides compatibility with existing LGX chassis & modules

Taking Density to New Heights

Using OmniPON™'s high-density splitter modules, operators can save valuable space while still employing a pay-as-you grow model. OmniPON™'s LGX splitter cassettes can house as many as 24 splitters when using MTP/MPO connectors or 12 splitters when using LC connectors.

Flexibility to Meet Your Needs

Our OmniPON™ coupler/splitter solution is available as a pay-as-you-grow model with 1-20 splitters in an LGX cassette with up to 12 cassettes in a single chassis. We offer 1 and 2U trays, and 4U chassis options for housing any of our passive modules, including our existing PON splitters as well as our next-generation co-existence multiplexers (CEx) solutions. Using OptiX2's OmniPON™ splitter modules, operators can increase their serving area per OLT port to achieve higher take rates. Furthermore, our modules can be ordered with additional ports for monitoring or merging existing services with the operator's future deployments in mind.

Integrated Monitoring

With our optional integrated monitoring port (1625-1650nm), operators can simply plug in an OTDR or other device and non-intrusively test or monitor the network.



maXtap™ Coupler/Splitter Technical Specifications

Parameter	Specification											
Operating Wavelength (nm)	1260~1650											
Type	1x2	1x4	1x8	1x16	1x32	1x64	2x2	2x4	2x8	2x16	2x32	2x64
Insertion Loss (dB) Max.*	≤4.0	≤7.3	≤10.6	≤14.0	≤17.0	≤21.5	≤4.2	≤7.6	≤11.2	≤14.5	≤18.2	≤22
Uniformity (dB) Max.*	≤0.6	≤0.8	≤1.0	≤1.5	≤2.0	≤2.5	≤0.8	≤1.2	≤1.5	≤2.0	≤2.5	≤3.0
PDL (dB) Max.*	≤0.2	≤0.2	≤0.2	≤0.3	≤0.3	≤0.4	≤0.3	≤0.3	≤0.3	≤0.4	≤0.4	≤0.4
Directivity (dB) Min*	55											
Return Loss (dB) Max*	55 APC / 50 UPC											
Operating Temperature (°C)	-40~+85											
Storage Temperature (°C)	-40~+85											
Fiber Length	1m or customer length											
Fiber Type	Corning SMF-28e Fiber (G.657A2 unless otherwise requested)											
Connector Type	Customer Specified											
Standards	ROHS Compliant, IEC61300, IEC61753-1, GR-1209 and 1221											

*Includes connector loss of 0.1dB per connector.



OptiX² Standard LGX Panels & Cassettes

The OptiX² LGX 1U Universal Panels offer flexibility and simplicity. The panels are designed for 19" racks and can accommodate all of OptiX²'s HX cassette-housed passive optical modules such as maXimum[®], OmniPON[™], maXpatch[™], and maXtap[™].

Table 1: LGX Cassette and Panel Mounting Options



12 LC simplex port LGX cassette with 2 MPO/MTP-12 adapters available for the rear of the module. Capable of housing dual duplex tap modules as well as multiple multiplexer configurations.

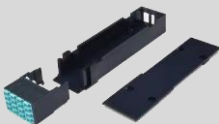


3 position standard LGX universal 19" rack mount panel for use with all OptiX² LGX single-width or high-density cassettes. Shown with optional rear cable management bar.

OptiX² Maximum Density 1U Cassettes and Chassis

The OptiX² MX 1U Universal Panels offer flexibility and simplicity. The panels are designed for 19" racks and can accommodate all of OptiX²'s MX cassette-housed passive optical modules such as maXimum[®], OmniPON[™], maXpatch[™], and maXtap[™].

Table 2: Maximum Density Cassette and Chassis



16 LC simplex port MX cassette with 2 MPO/MTP-12 adapters available for the rear of the module. Capable of housing 8 duplex or 16 simplex tap modules. Removable adapter head accommodates multiple adapter configurations.



16 slot chassis with rear opening to accommodate MPO/MTP trunk cables. Modules are securely fastened via the back panel and module guides.

16 slot standard MX universal 19" rack mount panel for use with all OptiX² HX cassettes.



Ordering Guide

Form		Fiber	Split Ratio	IN Port	Length	OUT Ports	Length		
OPTX-	OMP-	P-	X-	X-	XXXX-	X-	X-		
			1=Tube	1=900µm	0012=1x2	C=LCA	1=0.5m	C=LCA	1=0.5m
			2=LGX*	2=250µm	0013=1x3	D=LCU	2=1.0m	D=LCU	2=1.0m
			3=UHD*	X=N/A*	0014=1x4	E=SCA	X=N/A*	E=SCA	X=N/A*
			4=ABS		0015=1x5	F=SCU		F=SCU	
			5=Other		0016=1x6	M=MTP		M=MTP	
					0017=1x7	U=Unterminated		U=Unterminated	
					0018=1x8				
					0019=1x9				
					0112=1x12				
					0116=1x16				
					0124=1x24				
					0132=1x32				
					0164=1x64				
					1128=1x128				
					0022=2x2				
					0024=2x4				
					0028=2x8				
					0216=2x16				
					0232=2x32				
					0264=2x64				
					2128=2x128				

* It is not necessary to specify the fiber jacketing for a module or fiber length.

Note all fiber is G.657.A1 unless otherwise requested.

www.optix2.com

844-250-7074

sales@optix2.com

Specifications published here are current as of the date of publication of this document. Optix2 reserves the right to change specifications without prior notice.